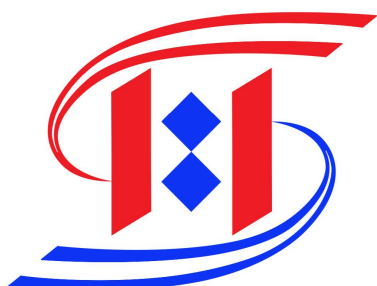


مشاوره، نظارت و اجرای سیستم‌های آتش‌نشانی



آبادگستر تاسیسات ایرانیان (آتا)
Abad Gostar Tasisat Iranian Co., LTD



فروش و تجهیز سیستم‌های اعلام و اطفاء حریق

آدرس دفتر مرکزی: ایران - تهران - بزرگراه شهید آیت الله اشرفی اصفهانی - خیابان پیامبر شرقی
خیابان شاهد - خیابان گلستان بیست و ششم - پلاک یک - واحد پنج - کد پستی ۱۴۷۳۶۸۷۷۸۵
تلفن همراه: +۹۸۹۳۹۹۶۰۳۸۰۰

تلفن دفتر مرکزی: ۹۱۰۹۲۰۷۶ - ۹۸۲۱+

آدرس پست الکترونیکی: info@atapars.com

آدرس سایت: www.atapars.com



Fire Sprinkler Monitoring Products



WATERFLOW DETECTOR MODEL F6001

SIZE 2"-8"

- Designed for both indoor and outdoor use; temperature range 0° C to 68° C.
- Equipped with tamper resistant screws to prevent unauthorized entry.
- Two synchronized switches are enclosed in a durable terminal block.
- Designed and built for accuracy and repeatability.
- UL/ULC Listed.
- FM Approved.
- GOST Certified.



SUPERVISORY SWITCH FOR INDICATOR POST MODEL WIP

WIP-1/WIP-2/WIP-3

- Designed for both indoor and outdoor use; temperature range -40° C to 60° C.
- Designed for use with Wall or Vertical indicator post.
- Enclosure with die cast finish, red powder coated.
- Two synchronized switches are enclosed in a durable terminal block.
- Designed and built for accuracy and repeatability.
- UL/ULC Listed.
- FM Approved.



SUPERVISORY SWITCH FOR OS&Y VALVE MODEL WOSY

WOSY-1/WOSY-2/WOSY-3

- Designed for both indoor and outdoor use; temperature range -40° C to 60° C.
- Designed for Outside Screw & Yoke (OS&Y) Gate Valve.
- Enclosure with die cast finish, red powder coated.
- Two synchronized switches are enclosed in a durable terminal block.
- Designed and built for accuracy and repeatability.
- UL/ULC Listed.
- FM Approved.



PRESSURE SWITCH MODEL WPS

WPS10-1/WPS10-2/WPS40-1/WPS40-2/WPS120-1/WPS120-2

- Designed for both indoor and outdoor use; temperature range -40° C to 60° C.
- Enclosure with die cast finish, red powder coated.
- Two synchronized switches are enclosed in a durable terminal block.
- Designed and built for accuracy and repeatability.
- UL/ULC Listed.
- FM Approved.



شرکت آباد گستر تاسیسات ایرانیان

آدرس دفتر مرکزی: ایران - تهران - بزرگراه شهید آیت الله اشرفی اصفهانی - خیابان پیامبر شرقی

خیابان شاهد - خیابان گلستان بیست و ششم - پلاک یک - واحد پنج - کد پستی ۱۴۷۳۶۸۷۷۸۵

تلفن همراه: +۹۸۹۳۹۹۶۰۳۸۰۰

تلفن دفتر مرکزی: +۹۸۲۱ - ۹۱۰۹۲۰۷۶

آدرس پست الکترونیکی: info@atapars.com

آدرس سایت: www.atapars.com

آباد گستر تاسیسات ایرانیان (تأ)
Abad Gostar Tasisat Iranian Co., LTD

Waterflow Detector Size 2"-8"

FIG-F6001

Specifications

- Equipped with tamper resistant screws to prevent unauthorized entry.
- Two synchronized switches are enclosed in a durable terminal block. Terminals are easy to read and wire.
- Built-In mechanical time delay feature; minimizing the risk of false alarms due to pressure surges or air trapped in the system.
- Offers excellent performance during riser vibrations caused by large in-rushes of water.
- Designed and built for accuracy and repeatability.
- Flow sensitivity range: 4-10 GPM (15-38 LPM).
- Contact rating: 8A@250VAC, 3A@24VDC, 2.5A@30VDC.
- UL/ULC Listed, FM Approved.
- COST Certified.

Working Pressure

- 450 PSI

Working Temperature

- 0-68°C

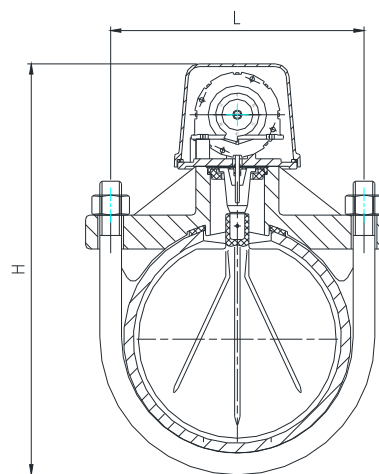
Corrosion Protection

- Fusion Bonded Epoxy Coated Interior and Exterior or Enamel Spray Paint, Interior and Exterior.

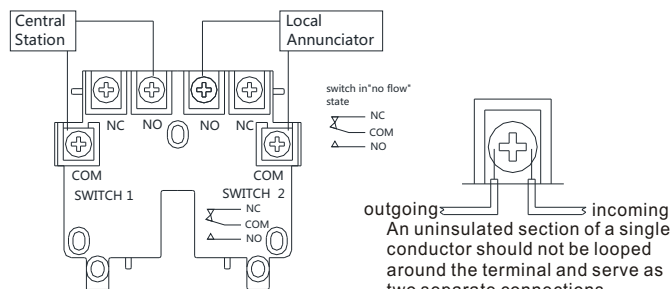
Dimensions

Size	DN 65		DN 80	
	/mm	/inch	/mm	/inch
L	92	3.62	104	4.09
H	200	7.87	220	8.66
Nominal Pipe Size OD	73	2.87	88.9	3.50
Pipe Wall Thickness	3.05-5.16	0.12-0.20	3.05-5.49	0.12-0.22
Size	DN 100		DN 125	
	/mm	/inch	/mm	/inch
L	133	5.24	160	6.30
H	245	9.65	270	10.63
Nominal Pipe Size OD	114.3	4.50	141.3	5.56
Pipe Wall Thickness	3.05-6.02	0.12-0.24	3.40-6.55	0.13-0.26
Size	DN 150		DN 200	
	/mm	/inch	/mm	/inch
L	187	7.36	239	9.41
H	300	11.8	350	13.78
Nominal Pipe Size OD	168.3	6.63	219.1	8.63
Pipe Wall Thickness	3.40-7.11	0.13-0.28	3.76-8.18	0.15-0.32

Schematic



Typical Connections



Vane-Type Waterflow Detector with NPT Threads Size 1"-2"

FIG-F6001T

Specifications

- Equipped with tamper resistant screws to prevent unauthorized entry.
- Two synchronized switches are enclosed in a durable terminal block. Terminals are easy to read and wire.
- Built-In mechanical time delay feature; minimizing the risk of false alarms due to pressure surges or air trapped in the system.
- Offers excellent performance during riser vibrations caused by large in-rushes of water.
- Designed and built for accuracy and repeatability.
- Flow sensitivity range: 4-10 GPM (15-38 LPM).
- Contact rating: 8A@250VAC, 3A@24VDC, 2.5A@30VDC.
- UL/ULC Listed.
- FM Approved.

Working Pressure

- 450 PSI

Working Temperature

- 0-68°C

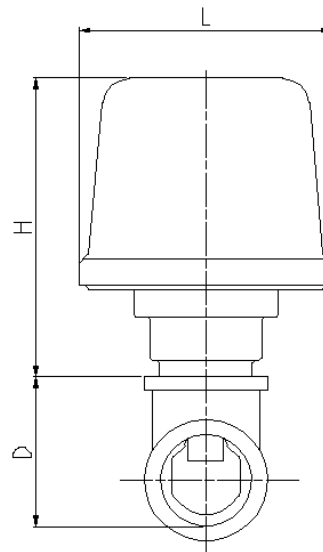
Corrosion Protection

- Fusion Bonded Epoxy Coated Interior and Exterior or Enamel Spray Paint, Interior and Exterior.

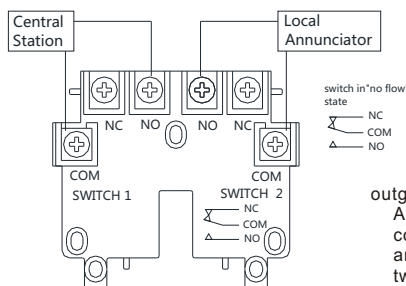
Dimensions

Size	1"		1 1/4"	
	/mm	/inch	/mm	/inch
L	93.2	3.67	93.2	3.67
H	110	4.33	110	4.33
D(Depth)	53.8	2.12	62.5	2.46
Size	1 1/2"		2"	
	/mm	/inch	/mm	/inch
L	93.2	3.67	93.2	3.67
H	110	4.33	110	4.33
D(Depth)	68.8	2.71	81.8	3.22

Schematic



Typical Connections



outgoing incoming
An uninsulated section of a single conductor should not be looped around the terminal and serve as two separate connections



شرکت آبادگستر تاسیسات ایرانیان

آدرس دفتر مرکزی: ایران - تهران - بزرگراه شهید آیت الله اشرفی اصفهانی - خیابان پیامبر شرقی
خیابان شاهد - خیابان گلستان بیست و ششم - پلاک یک - واحد پنج - کد پستی ۱۴۷۳۶۸۷۷۸۵
تلفن دفتر مرکزی: ۹۱۰۹۲۰۷۶ - ۹۸۲۱
تلفن همراه: ۹۸۹۳۹۹۶۰۳۸۰۰
آدرس پست الکترونیکی: info@atapars.com
www.atapars.com

The designs, materials and specifications shown are subject to change without notice due to the continuous development of our products.

Vane Type Waterflow Detector

FIG. F6001
FIG. F6001T

Specifications

- Equipped with tamper resistant screws to prevent unauthorized entry.
- Two synchronized switches are enclosed in a durable terminal block. Terminals are easy to read and wire.
- Built-In mechanical time delay feature; minimizing the risk of false alarms due to pressure surges or air trapped in the system.
- Offers excellent performance during riser vibrations caused by large in-rushes of water.
- Designed and built for accuracy and repeatability.
- Flow sensitivity range
UL/FM: 4-10 GPM (15-38 LPM)
CE: 30-57L/min
- Contact rating
UL/FM: 8A at 250VAC, 3A at 24VDC, 2.5A at 30VDC
CE: 8A at 125/250VAC, 3A at 24VDC

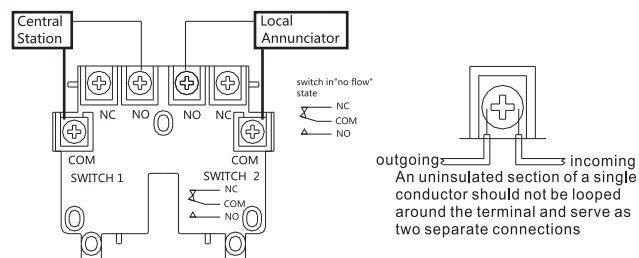
Working Pressure and Temperature

- UL/FM: 450psi @ 0°C- 68°C temperature.
- CE: 16bar @ 0°C- 68°C temperature.

Material Specifications

Fig.	Saddle	Cover
F6001	Aluminum B85 A04130	PC Aluminum B85 A04130
F6001T	Bronze, B148 C95200	PC Aluminum B85 A04130

Typical Connections



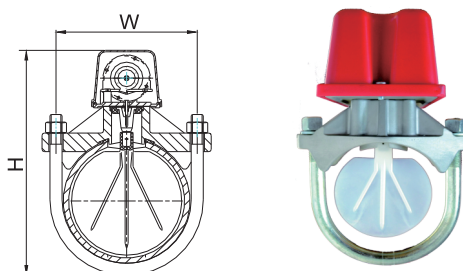
-UL/ULC Listed, FM Approved, GOST and CE Certificated

F6001

Dimensions (mm / Inch)

Size	2	2.5	3	4	5
W	84 / 3.31	92 / 3.62	104 / 4.09	133 / 5.24	160 / 6.30
H	190 / 7.48	200 / 7.87	220 / 8.66	245 / 9.65	270 / 10.63
Nominal Pipe Size OD.	60.3 / 2.37	73 / 2.87	88.9 / 3.50	114.3 / 4.50	141.3 / 5.56
Pipe Wall Thickness	2.77 - 3.91 / 0.11 - 0.15	3.05 - 5.16 / 0.12 - 0.20	3.05 - 5.49 / 0.12 - 0.22	3.05 - 6.02 / 0.12 - 0.24	3.40 - 6.55 / 0.13 - 0.26

Size	6	8
W	187 / 7.36	239 / 9.41
H	300 / 11.8	350 / 13.78
Nominal Pipe Size OD.	168.3 / 6.63	219.1 / 8.63
Pipe Wall Thickness	3.40 - 7.11 / 0.13 - 0.28	3.76 - 8.18 / 0.15 - 0.32



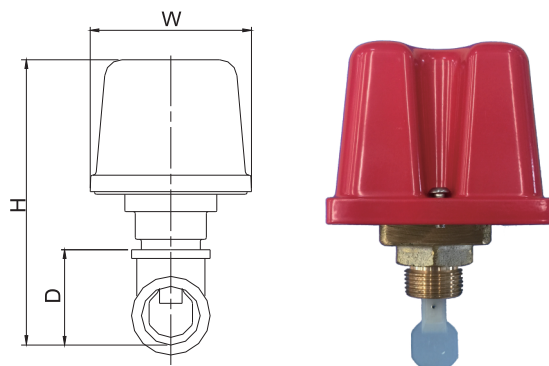
- UL/ULC Listed, FM Approved, CE Certificated

F6001T

Dimensions (mm / Inch)

Size	1	1-1/4
W	93 / 3.67	93 / 3.67
H	164 / 6.46	172.5 / 6.79
D (Depth)	54 / 2.12	62.5 / 2.46

Size	1-1/2	2
W	93 / 3.67	93 / 3.67
H	179 / 7.05	192 / 7.56
D (Depth)	69 / 2.71	82 / 3.22



Notes

• Designs, materials and specifications shown are subject to change without notice due to the continuous development of our products.

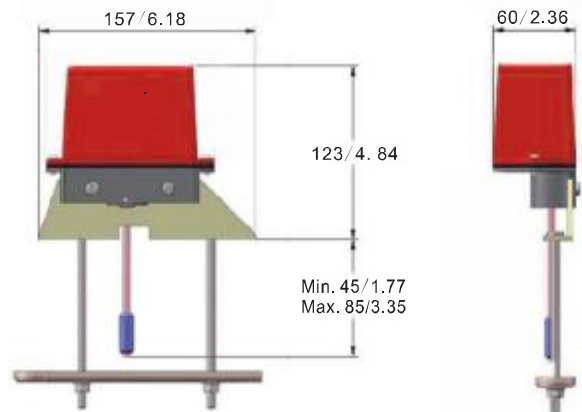
Supervisory Switch for OS&Y Gate Valves

FIG. WOSY-1 / WOSY-2 / WOSY-3

Features

- Weight: 0.6 kg.
- Enclosure:
Cover: Die cast, Aluminum Alloy, ASTM B85 A04130.
Finish: Red powder coat.
Base: Die cast, Aluminum Alloy, ASTM B85 A04130.
All parts have corrosion resistant finishes.
- Cover tamper:
Tamper resistant screws.
Cover tamper switch available.
3 AMPS / 5 AMPS at 125/250 VAC.
- Contact Ratings:
WOSY-1: one set of SPDT.
WOSY-2: two sets of SPDT.
WOSY-3: two sets of SPDT and cover tamper switch.
10 AMPS at 125/250 VAC.
2.5 AMPS at 30 VDC resistive.
- Conduit Entrances:
One knockout and one hole for ½" conduit provided.
- Service Use: NFPA 13, 13D, 13R, 72.
- IP 67.

Schematic & Dimensions (mm / Inch)



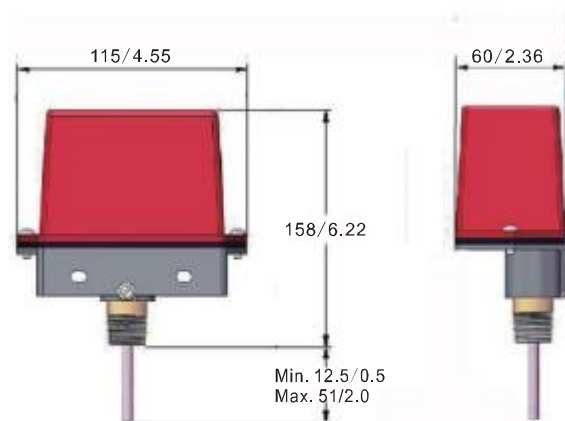
Supervisory Switch for Indicator Post and Stop Valves

FIG. WIP-1 / WIP-2 / WIP-3

Features

- Weight: 0.45 kg.
- Enclosure:
Cover: Die cast, Aluminum Alloy, ASTM B85 A04130.
Finish: Red powder coat.
Base: Die cast, Aluminum Alloy, ASTM B85 A04130.
All parts have corrosion resistant finishes.
- Cover tamper:
Tamper resistant screws.
Cover tamper switch available.
3 AMPS / 5 AMPS at 125/250 VAC.
- Contact Ratings:
WIP-1: one set of SPDT.
WIP-2: two sets of SPDT.
WIP-3: two sets of SPDT and cover tamper switch.
10 AMPS at 125/250 VAC.
2.5 AMPS at 30 VDC resistive.
- Conduit Entrances:
One knockout and one hole for ½" conduit provided.
- IP 67.

Schematic & Dimensions (mm / Inch)



شرکت آبادگستر تاسیسات ایرانیان

آدرس دفتر مرکزی: ایران - تهران - بزرگراه شهید آیت الله اشرفی اصفهانی - خیابان پیامبر شرقی

خیابان شاهد - خیابان گلستان بیست و ششم - پلاک یک - واحد پنج - کد پستی ۱۴۷۳۶۸۷۷۸۵

تلفن همراه: +۹۸۹۳۹۹۶۰۳۸۰۰

تلفن دفتر مرکزی: +۹۸۲۱ - ۹۱۰۹۲۰۷۶

آدرس پست الکترونیکی: info@atapars.com

آدرس سایت: www.atapars.com

Notes

- Designs, materials and specifications shown are subject to change without notice due to the continuous development of our products.

Pressure Switch

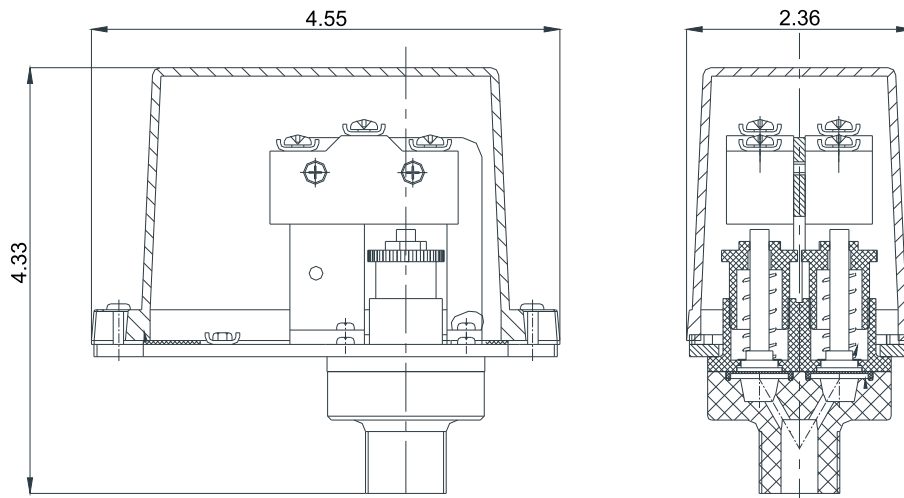
WPS10-1 WPS10-2 WPS40-1 WPS40-2 WPS120-1 WPS120-2

Features:

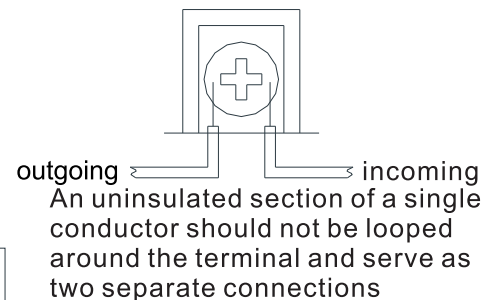
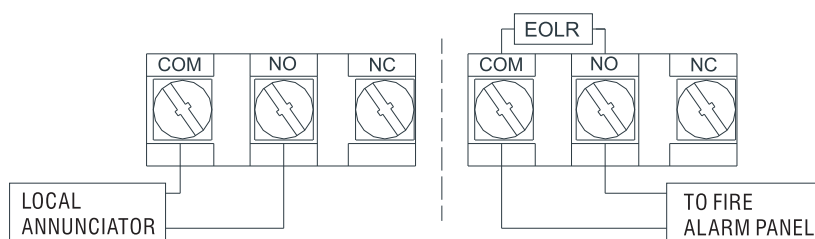
- Maximum Adjustment Pressure Range:
WPS10-1/WPS10-2: 4-20psi
WPS40-1/WPS40-2: 10-100psi
WPS120-1/WPS120-2: 10-200psi
- Factory Setting:
WPS10-1, WPS10-2: 4-8 psi
WPS40-1: operates at decreasing pressure at 30 psi
WPS40-2: operates at increasing pressure at 50 psi and decreasing pressure 30 psi
WPS120-1: operates at decreasing pressure at 110 psi
WPS120-2: operates at increasing pressure at 130 psi and decreasing pressure 110 psi
- Approximate Differential:
WPS10-1/WPS10-2: 3 psi throughout range
WPS40-1/WPS40-2: 3 psi @ 10psi & 6psi @ 100psi
WPS120-1/WPS120-2: 3 psi @ 10psi & 9psi @ 200psi
- Contact Rating:
10A@125/250VAC,
2.5A@30VDC
- UL/ULC Listed.
- FM Approved.



Schematic&Dimensions /inch



Typical Connections



The designs, materials and specifications shown are subject to change without notice due to the continuous development of our products.



آدرس دفتر مرکزی: ایران - تهران - بزرگراه شهید آیت الله اشرفی اصفهانی - خیابان پیامبر شرقی
خیابان شاهد - خیابان گلستان بیست و ششم - پلاک یک - واحد پنج - کد پستی ۱۴۷۳۶۸۷۷۸۵
تلفن همراه: +۹۸۹۳۹۹۶۰۳۸۰۰
تلفن دفتر مرکزی: +۹۸۲۱ - ۹۱۰۹۲۰۷۶
آدرس پست الکترونیکی: info@atapars.com
آدرس سایت: www.atapars.com