

مشاوره، نظارت و اجرای سیستم‌های آتش نشانی



آبادگستر تاسیسات ایرانیان (آتا)
Abad Gostar Tasisat Iranian Co., LTD



فروش و تجهیز سیستم‌های اعلام و اطفاء حریق

آدرس دفتر مرکزی: ایران - تهران - بزرگراه شهید آیت الله اشرفی اصفهانی - خیابان پیامبر شرقی
خیابان شاهد - خیابان گلستان بیست و ششم - پلاک یک - واحد پنج - کد پستی ۱۴۷۳۶۸۷۷۸۵
تلفن همراه: +۹۸۹۳۹۹۶۰۳۸۰۰

تلفن دفتر مرکزی: ۹۱۰۹۲۰۷۶ - ۹۸۲۱

آدرس پست الکترونیکی: info@atapars.com

آدرس سایت: www.atapars.com

Trusted above all.

Apollo Fire Detection Systems Product Catalogue



شرکت آبادگستر تاسیسات ایرانیان

آدرس دفتر مرکزی: ایران - تهران - بزرگراه شهید آیت الله اشرفی اصفهانی - خیابان پیامبر شرقی

خیابان شاهد - خیابان گلستان بیست و ششم - پلاک یک - واحد پنج - کد پستی ۱۴۷۳۶۸۷۷۸۵

تلفن همراه: +۹۸۹۳۹۹۶۰۳۸۰۰

تلفن دفتر مرکزی: ۹۱۰۹۲۰۷۶ - ۹۸۲۱

آدرس پست الکترونیکی: info@atapars.com

آدرس سایت: www.atapars.com

UL/ULC/FM

Apollo's product offering includes the detectors & other devices developed and approved for the UL/ULC/FM markets. Apollo has carefully researched and developed the ranges to ensure that they meet not only UL and other standards but also the demands of today's high technology environments.

Key features of Discovery UL include:

- XPERT Card addressing
- Resists steam and cigarette smoke
- Flashing LED option
- Five response modes for adaptability to changing environments
- Drift compensation to ensure constant sensitivity
- Capable of recording site specific data in the detector
- Alarm flags for fast alarm reporting
- Conventional alarm facility during control panel processor fault
- 360° visibility alarm indication
- Compatible with

Advanced features for notification devices:

- Global and group addressing
- 15 tone pairs
- Volume selection
- Synchronisation of all loop-powered notification devices



آبادگستر تاسیسات ایرانیان (آتا)
Abad Gostar Tasisat Iranian Co., LTD

شرکت آبادگستر تاسیسات ایرانیان

آدرس دفتر مرکزی: ایران - تهران - بزرگراه شهید آیت الله اشرفی اصفهانی - خیابان پیامبر شرقی
خیابان شاهد - خیابان گلستان بیست و ششم - پلاک یک - واحد پنج - کد پستی ۱۴۷۳۶۸۷۷۸۵
تلفن همراه: ۰۳۸۰۰۳۹۹۶۰۹۸۹۳

آدرس پست الکترونیکی: info@atapars.com

تلفن دفتر مرکزی: ۰۹۱۰۹۲۰۷۶ - ۹۸۲۱

آدرس سایت: www.atapars.com

apollo
WORLD CLASS FIRE SOLUTIONS



DISCOVERY®



Discovery UL is a line of high-specification, intelligent fire detectors developed to meet the requirements of sophisticated systems while providing engineers with an additional dimension in fire protection capability. Discovery UL has a 'distributed intelligence' system where decisions are made in the detector head as well as at the control panel. Drift compensation is also incorporated into the detector, allowing it to adapt to dirty or dusty environments, which reduces false alarms.

Each detector in the Discovery UL range can operate in one of five response modes, which can be selected from the control panel. The response characteristics have been carefully established so that the detectors comply with the requirements of UL in all response modes. Mode One will give a higher sensitivity to fire than Mode Five. Discovery UL gives you total reassurance in installations where adaptability to changing conditions and protection against unwanted alarms are vital.



آباد گستر تاسیسات ایرانیان (آتا)
Abad Gostar Tasisat Iranian Co., LTD

شرکت آباد گستر تاسیسات ایرانیان

آدرس دفتر مرکزی: ایران - تهران - بزرگراه شهید آیت الله اشرفی اصفهانی - خیابان پیامبر شرقی

خیابان شاهد - خیابان گلستان بیست و ششم - پلاک یک - واحد پنج - کد پستی ۱۴۷۳۶۸۷۷۸۵

تلفن همراه: +۹۸۹۳۹۹۶۰۳۸۰۰

تلفن دفتر مرکزی: +۹۸۲۱ - ۹۱۰۹۲۰۷۶

آدرس پست الکترونیکی: info@atapars.com

آدرس سایت: www.atapars.com

Discovery UL Photoelectric Smoke Detector



The Discovery UL Photoelectric Smoke Detector works using the light scatter principle and is ideal for applications where slow-burning or smoldering fires are likely.

- Responds well to slow-burning, smoldering fires
- Well suited for bedrooms and escape routes
- Unaffected by wind or atmospheric pressure
- Remote test feature

58000-650

Discovery UL Photoelectric Smoke Detector

Discovery UL Multisensor Detector



The Discovery UL Multisensor Detector consists of photoelectric smoke and thermistor temperature sensors whose outputs are combined to give the final analogue value. As a result, the multisensor is useful over a wide range of applications and is highly immune to false alarms.

- Ideal for wide range of applications
- Highly immune to false alarms
- Well suited for sensitive environments
- Unaffected by wind or atmospheric pressure
- Remote test feature

58000-750

Discovery UL Multisensor Detector

Discovery UL Ionisation Smoke Detector



The Discovery UL Ionisation Detector uses a low activity radioactive foil to detect fires by irradiating the air in the smoke chambers and causing a current flow. If smoke enters the chamber, the current flow is reduced leading to an alarm.

- Responds well to fast-burning, flaming fires
- Designed to operate in a variety of environments
- Remote test feature

58000-550

Discovery UL Ionisation Smoke Detector

Discovery UL Heat Detector



The Discovery UL Heat Detector is distinguishable by the low airflow resistant case and uses a single thermistor to sense the air temperature around the detector.

- Ideal for environments that are dirty or smoky under normal conditions
- Well suited for warehouses, loading docks and parking garages
- Unaffected by wind or atmospheric pressure
- Remote test feature

58000-450

Discovery UL Heat Detector



آباد گستر تاسیسات ایرانیان (آتا)
Abad Gostar Tasisat Iranian Co., LTD

شرکت آباد گستر تاسیسات ایرانیان

آدرس دفتر مرکزی: ایران - تهران - بزرگراه شهید آیت الله اشرفی اصفهانی - خیابان پیامبر شرقی

خیابان شاهد - خیابان گلستان بیست و ششم - پلاک یک - واحد پنج - کد پستی ۱۴۷۳۶۸۷۷۸۵

تلفن همراه: +۹۸۹۳۹۹۶۰۳۸۰۰

تلفن دفتر مرکزی: +۹۸۲۱ - ۹۱۰۹۲۰۷۶

آدرس پست الکترونیکی: info@atapars.com

آدرس سایت: www.atapars.com





XP95A



The XP95A range of analogue addressable fire detectors is advanced in design and performance and offers unique features that benefit both the installer and the end user.

The range is based on Apollo's XP95 range. XP95A has a 'central intelligence' system where all the decisions are made by the control panel. Each detector is addressed using Apollo's patented XPERT card, supplied with the mounting bases. The XP95A range includes an Ionisation Detector, a Photoelectric Detector, a Heat Detector, a Multisensor, an Isolator and a series of Modules.

Key features of XP95A include:

- XPERT card addressing
- Analogue value report
- Alarm flags for fast alarm response
- Synchronisation of all loop-powered notification devices
- Advanced error check



آبادگستر تاسیسات ایرانیان (آب)
Abad Gostar Tasifat Iranian Co., LTD

شرکت آبادگستر تاسیسات ایرانیان

آدرس دفتر مرکزی: ایران - تهران - بزرگراه شهید آیت الله اشرفی اصفهانی - خیابان پیامبر شرقی

خیابان شاهد - خیابان گلستان بیست و ششم - پلاک یک - واحد پنج - کد پستی ۱۴۷۳۶۸۷۷۸۵

تلفن همراه: +۹۸۹۳۹۹۶۰۳۸۰۰

تلفن دفتر مرکزی: +۹۸۲۱ - ۹۱۰۹۲۰۷۶

آدرس پست الکترونیکی: info@atapars.com

آدرس سایت: www.atapars.com

XP95A Photoelectric Smoke Detector



The XP95A Photoelectric Smoke Detector works on the light-scatter principle and is ideal for applications where slow-burning or smoldering fires are likely.

- Responds well to slow-burning, smoldering fires
- Well suited for bedrooms and escape routes
- Unaffected by atmospheric pressure

55000-650

XP95A Photoelectric
Smoke Detector

XP95A Multisensor



The XP95A Multisensor contains a photoelectric smoke sensor and a thermistor (temperature sensor) whose outputs are combined to give the final analogue value.

- Sensitive to a wide range of fires
- Well suited for environments such as hotel bedrooms, warehouses and loading docks
- Unaffected by wind or atmospheric pressure

55000-886

XP95A Multisensor

XP95A Ionisation Smoke Detector



The XP95A Ionisation Smoke Detector uses a low activity radioactive foil to detect fires by irradiating the air in the smoke chambers causing a current flow. If smoke enters the chamber, the current flow is reduced leading to an alarm.

- Responds well to fast-burning, flaming fires
- Designed to operate in a variety of environments
- Minimal effects from temperature, humidity, atmospheric pressure

55000-550

XP95A Ionisation
Smoke Detector †

55000-555

XP95A Ionisation Smoke
Detector (ULC)

XP95A Heat Detector



The XP95A Heat Detector monitors temperature by using a single thermistor which provides a voltage output proportional to the external air temperature. It is classified as an ordinary detector by UL.

- Ideal for environments that are dirty or smoky under normal conditions
- Well suited for warehouses, loading docks and parking garages
- Unaffected by wind or atmospheric pressure

55000-450

XP95A Heat Detector

† Does not have ULC approval

apollo
WORLD CLASS FIRE SOLUTIONS


آبادگستر تاسیسات ایرانیان (آتا)
Abad Gostar Tasisat Iranian Co., LTD

شرکت آبادگستر تاسیسات ایرانیان

آدرس دفتر مرکزی: ایران - تهران - بزرگراه شهید آیت الله اشرفی اصفهانی - خیابان پیامبر شرقی

خیابان شاهد - خیابان گلستان بیست و ششم - پلاک یک - واحد پنج - کد پستی ۱۴۷۳۶۸۷۷۸۵

تلفن همراه: +۹۸۹۳۹۹۶۰۳۸۰۰

تلفن دفتر مرکزی: +۹۸۲۱ - ۹۱۰۹۲۰۷۶

آدرس پست الکترونیکی: info@atapars.com

آدرس سایت: www.atapars.com



series 65A

9-33V



Series 65A is a range of conventional fire detectors available in three versions:

- Standard
- Flashing LED
- Flashing LED and magnet operated test switch

CSFM



SIGNALING



آبادگستر تاسیسات ایرانیان (آتا)
Abad Gostar Tasifat Iranian Co., LTD

شرکت آبادگستر تاسیسات ایرانیان

آدرس دفتر مرکزی: ایران - تهران - بزرگراه شهید آیت الله اشرفی اصفهانی - خیابان پیامبر شرقی

خیابان شاهد - خیابان گلستان بیست و ششم - پلاک یک - واحد پنج - کد پستی ۱۴۷۳۶۸۷۷۸۵

تلفن همراه: +۹۸۹۳۹۹۶۰۳۸۰۰

تلفن دفتر مرکزی: +۹۸۲۱ - ۹۱۰۹۲۰۷۶

آدرس پست الکترونیکی: info@atapars.com

آدرس سایت: www.atapars.com

Series 65A Photoelectric Smoke Detector



The Series 65A Photoelectric Smoke Detector incorporates a pulsing LED located within the housing of the detector. The detector housing is identical to that of the Ionisation Detector but has an indicator LED which is clear in quiescent state but produces red light in alarm.

- Responds well to slow-burning, smouldering fires
- Well suited for bedrooms and escape routes
- Unaffected by wind or atmospheric pressure
- Wide operating voltage
- Flashing LED option
- Flashing LED and magnet operated test switch option

55000-327

Series 65A Photoelectric Smoke Detector standard

55000-326

Series 65A Photoelectric Smoke Detector with flashing LED

55000-325

Series 65A Photoelectric Smoke Detector with flashing LED and magnetic test switch

55000-328

Series 65A Photoelectric Smoke Detector – high sensitivity

Series 65A Ionisation Smoke Detector



The Series 65A Ionisation Smoke Detector uses a low activity radioactive foil to detect fires by irradiating the air in the smoke chamber causing a current flow. If smoke enters the chamber, the current flow is reduced leading to an alarm.

- Responds well to fast-burning, flaming fires
- Designed to operate in a variety of environments
- Wide operating voltage
- Flashing LED option
- Flashing LED and magnet operated test switch option

55000-227

Series 65A Ionisation Smoke Detector standard

55000-226

Series 65A Ionisation Smoke Detector with flashing LED

55000-225

Series 65A Ionisation Smoke Detector with flashing LED and magnetic test switch

Series 65A Heat Detector



The Series 65A Heat Detector monitors temperature by using a dual thermistor network which provides a voltage output proportional to the external air temperature. There are nine heat detectors in the Series 65A range designed to suit a wide variety of operating conditions.

- Can be used for applications where smoke detectors are unsuitable
- Ideal environments that are dirty or smoky under normal conditions
- Wide operating voltage
- Flashing LED option
- Flashing LED and magnet operated test switch option

55000-140 135°F standard

55000-139 135°F with flashing LED

55000-138 135°F with flashing LED and magnetic test switch

55000-143 170°F standard

55000-142 170°F with flashing LED

55000-141 170°F with flashing LED and magnetic test switch

55000-146 200°F standard

55000-145 200°F with flashing LED

55000-144 200°F with flashing LED and magnetic test switch



آبادگستر تاسیسات ایرانیان (آتا)
Abad Gostar Tasisat Iranian Co., LTD

شرکت آبادگستر تاسیسات ایرانیان

آدرس دفتر مرکزی: ایران - تهران - بزرگراه شهید آیت الله اشرفی اصفهانی - خیابان پیامبر شرقی

خیابان شاهد - خیابان گلستان بیست و ششم - پلاک یک - واحد پنج - کد پستی ۱۴۷۳۶۸۷۷۸۵

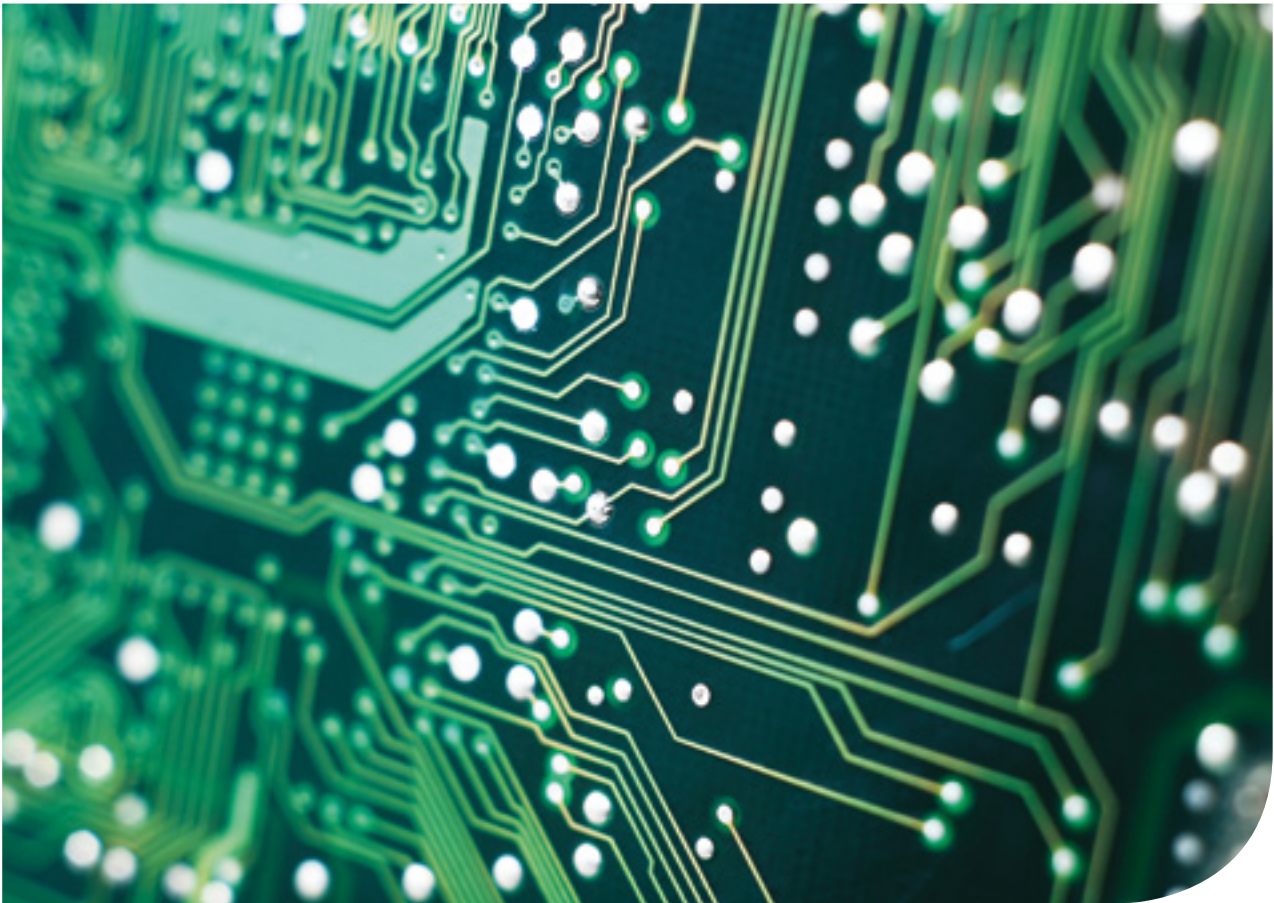
تلفن همراه: +۹۸۹۳۹۹۶۰۳۸۰۰

تلفن دفتر مرکزی: +۹۸۲۱ - ۹۱۰۹۲۰۷۶

آدرس پست الکترونیکی: info@atapars.com

آدرس سایت: www.atapars.com





Modules

DISCOVERY® XP95A



شرکت آباد گستر تاسیسات ایرانیان

آدرس دفتر مرکزی: ایران - تهران - بزرگراه شهید آیت الله اشرفی اصفهانی - خیابان پیامبر شرقی

خیابان شاهد - خیابان گلستان بیست و ششم - پلاک یک - واحد پنج - کد پستی ۱۴۷۳۶۸۷۷۸۵

تلفن همراه: +۹۸۹۳۹۹۶۰۳۸۰۰

تلفن دفتر مرکزی: ۹۱۰۹۲۰۷۶ - ۹۸۲۱

آدرس پست الکترونیکی: info@atapars.com

آدرس سایت: www.atapars.com

XP95A Isolator



The XP95A Isolator is placed at intervals on the loop and ensures that, in the case of a short-circuit, only the section between the isolators will be affected. When the short-circuit is removed, the isolators automatically restore power and data to the isolated section.

- Detects wiring short-circuits using patented technology
- Minimises disruption from short-circuits
- Automatic de-isolation on short-circuit removal
- Up to 20 devices may be installed between isolators

55000-750 XP95A Isolator

Mini Monitor Module



The Mini Monitor Module is an interface within an entirely new housing. This allows the unit to be fitted onto a standard 35mm DIN-Rail (using a twist-click motion) or mounted within an enclosure, for example a Pull Station. It is designed to monitor the state of one or more single pole, voltage-free contacts connected on a single pair of cables and to report the status to Apollo compatible analogue control equipment.

- Designed for use where space is limited
- Interrupt/non interrupt in one unit
- 'Pre-alarm' status available
- Three, coloured LEDs, giving clearer status indication

55000-765 Mini Monitor Module

XP95A Mini Switch Monitor Module



The XP95A Mini Switch Monitor Module is designed to monitor the state of one or more single pole, voltage-free contacts and to report the status to Apollo compatible analogue control equipment.

- Three input states - 'normal', 'trouble', and 'alarm'
- Visible LED with remote LED connection option
- Loop-powered
- Designed to fit into equipment with limited space
- Easy to install

55000-831

XP95A Mini Switch Monitor Module

XP95A Mini Priority Switch Monitor Module



The XP95A Mini Priority Switch Monitor Module is designed to monitor the state of one or more single pole, voltage-free contacts and to report the status to Apollo compatible analogue control equipment. It can also place a signal on the loop to provide early warning if a device such as a pull station is operated.

- Three input states - 'normal', 'trouble' and 'alarm'
- Visible LED with remote LED connection option
- Loop-powered
- Designed to fit into equipment with limited space
- Easy to install
- Monitors equipment where a fast response is required
- Interrupt facility

55000-830

XP95A Mini Priority Switch Monitor Module

XP95A Switch Monitor Module



The XP95A Switch Monitor Module is designed to monitor the state of one or more single pole, voltage-free contacts and to report the status to Apollo compatible analogue control equipment.

- Three input states - 'normal', 'trouble', and 'alarm'
- Visible LED
- Loop-powered

55000-805

XP95A Switch Monitor Module

XP95A Priority Switch Monitor Module



The XP95A Priority Switch Monitor Module is designed to monitor the state of one or more single pole, voltage-free contacts and to report the status to Apollo compatible analogue control equipment. It can also place a signal on the loop to provide early warning if a device such as a pull station is operated.

- Three input states - 'normal', 'trouble', and 'alarm'
- Visible LED
- Loop-powered
- Fast response time
- Interrupt facility

55000-806

XP95A Priority Switch Monitor Module



آبادگستر تاسیسات ایرانیان (آتا)
Abad Gostar Tasifat Iranian Co., LTD

شرکت آبادگستر تاسیسات ایرانیان

آدرس دفتر مرکزی: ایران - تهران - بزرگراه شهید آیت الله اشرفی اصفهانی - خیابان پیامبر شرقی

خیابان شاهد - خیابان گلستان بیست و ششم - پلاک یک - واحد پنج - کد پستی ۱۴۷۳۶۸۷۷۸۵

تلفن همراه: +۹۸۹۳۹۹۶۰۳۸۰۰

تلفن دفتر مرکزی: +۹۸۲۱ - ۹۱۰۹۲۰۷۶

آدرس پست الکترونیکی: info@atapars.com

آدرس سایت: www.atapars.com

XP95A Dual Priority Switch Monitor Module



The XP95A Dual Priority Switch Monitor Module contains two priority mini switch monitor modules on a single plate.

- Loop-powered
- Fast response time
- Interrupt facility

55000-790

XP95A Dual Priority Switch Monitor Module

XP95A Switch Monitor Input/ Output Module



The XP95A Switch Monitor Input/Output Module provides a voltage-free, single pole, changeover relay output, a single, monitored switch input and unmonitored, non-polarised opto-coupled input.

- Reports 'trouble', 'switch open' and 'switch closed' levels
- Visible LED
- Loop-powered

55000-820

XP95A Switch Monitor Input/Output Module

XP95A Sounder Control Module



The XP95A Sounder Control Module monitors and controls the operation of a zone of conventional sounders and reports their status to the control panel.

- Allows sounders to be operated continuously or be pulsed, 1 second on, 1 second off
- May be synchronised when in pulsed operation
- Can also be used for public address speakers

55000-825

XP95A Sounder Control Module



آبادگستر تاسیسات ایرانیان (آتا)
Abad Gostar Tasisat Iranian Co., LTD

شرکت آبادگستر تاسیسات ایرانیان

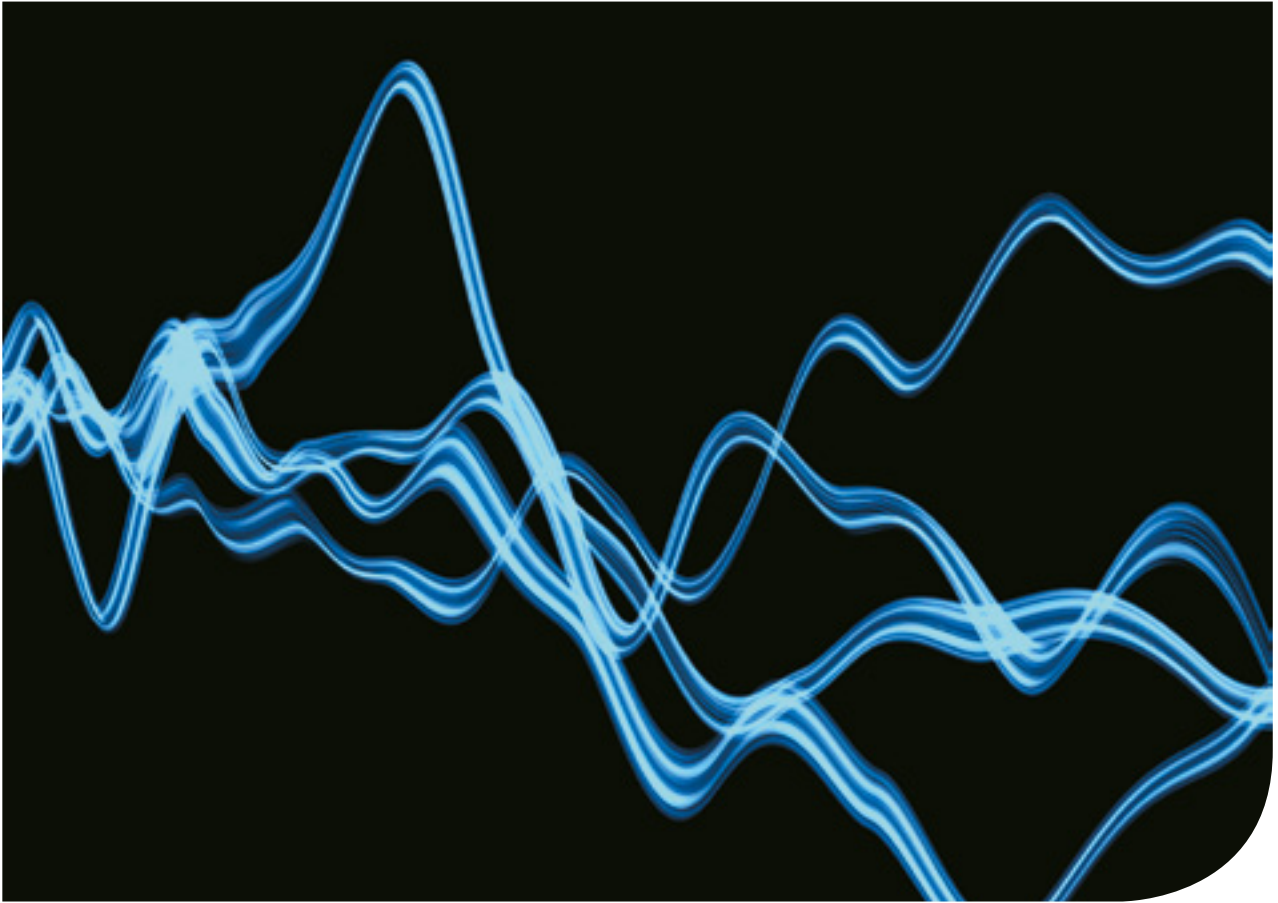
آدرس دفتر مرکزی: ایران - تهران - بزرگراه شهید آیت الله اشرفی اصفهانی - خیابان پیامبر شرقی
خیابان شاهد - خیابان گلستان بیست و ششم - پلاک یک - واحد پنج - کد پستی ۱۴۷۳۶۸۷۷۸۵
تلفن همراه: +۹۸۹۳۹۹۶۰۳۸۰۰

آدرس پست الکترونیکی: info@atapars.com

تلفن دفتر مرکزی: +۹۸۲۱ - ۹۱۰۹۲۰۷۶

آدرس سایت: www.atapars.com





Notification Devices

DISCOVERY® XP95A



آبادگستر تاسیسات ایرانیان (آتا)
Abad Gostar Tasisat Iranian Co., LTD

شرکت آبادگستر تاسیسات ایرانیان

آدرس دفتر مرکزی: ایران - تهران - بزرگراه شهید آیت الله اشرفی اصفهانی - خیابان پیامبر شرقی

خیابان شاهد - خیابان گلستان بیست و ششم - پلاک یک - واحد پنج - کد پستی ۱۴۷۳۶۸۷۷۸۵

تلفن همراه: +۹۸۹۳۹۹۶۰۳۸۰۰

تلفن دفتر مرکزی: +۹۸۲۱ - ۹۱۰۹۲۰۷۶

آدرس پست الکترونیکی: info@atapars.com

آدرس سایت: www.atapars.com

XP95A Open-Area Sounder



The XP95A Open-Area Sounder has been designed for use in open areas and can be connected to any Discovery UL or XP95A system.

- For use with XP95A and Discovery UL systems
- Self-test trouble monitoring
- Two volume settings 92dB(A) and 100dB(A)
- Synchronisation of tones
- Individual and group addressing
- Built-in isolator
- Available in red or white
- Loop-powered
- IP65 rated

55000-041

XP95A Open-Area Sounder (red)

55000-042

XP95A Open-Area Sounder (white)

XP95A Sounder Visual Indicator Base



The XP95A Sounder Visual Indicator Base is a loop-powered sounder and visual indicator combined with a standard Intelligent Mounting Base. It is used to signal a fire alarm in enclosed areas. The sounder visual indicator base can be used either with a detector fitted or with a cap for operation as a stand-alone alarm device.

- Two volume ranges 55-75dB(A) and 75-91dB(A)
- Visual indicator flash rate of once per second
- Synchronisation of 'alert' and 'evacuate' tones
- Synchronisation of visual indicator flash
- Individual and group addressing
- Unique acoustic and visual indicator self-test
- Built-in isolator

45681-525

XP95A Sounder Visual Indicator Base (yellow LEDs)

45681-526

XP95A Sounder Visual Indicator Base (red LEDs)

Discovery UL Open-Area Sounder Visual Indicator



The Discovery UL Open-Area Sounder Visual Indicator makes full use of the Discovery protocol, designed for use in indoor, outdoor and open areas.

- 15 tone pairs
- Sounder and visual indicator are independently configurable
- Volume and tone settings are independently selectable from the control panel
- Tones can be used for other purposes in addition to warning of fire, ideal for use in schools etc
- Soft start option, ideal for hospitals and nursing homes
- Group and global control for increased response time

58000-011

Discovery UL Open-Area Sounder Visual Indicator (red lens)

58000-012

Discovery UL Open-Area Sounder Visual Indicator (white lens)

Discovery UL Sounder Visual Indicator Base



The Discovery UL Sounder Visual Indicator Base makes full use of the Discovery protocol. For ease of commissioning a 'Magnetic Wand' can be used to test and adjust each sounder locally.

- Sounder and visual indicator are independently configurable
- Volume and tone settings are independently selectable from the control panel
- Tones can be used for other purposes in addition to warning of fire, ideal for schools etc
- Enables soft start option, ideal for hospitals and nursing homes
- Electronic bell tone

45681-524

Discovery UL Sounder Visual Indicator Base (red LEDs)

45681-527

Discovery UL Sounder Visual Indicator Base (yellow LEDs)

29650-001

Magnetic Wand



Pull Stations

DISCOVERY® XP95A



آبادگستر تاسیسات ایرانیان (آتا)
Abad Gostar Tasisat Iranian Co., LTD

شرکت آبادگستر تاسیسات ایرانیان

آدرس دفتر مرکزی: ایران - تهران - بزرگراه شهید آیت الله اشرفی اصفهانی - خیابان پیامبر شرقی

خیابان شاهد - خیابان گلستان بیست و ششم - پلاک یک - واحد پنج - کد پستی ۱۴۷۳۶۸۷۷۸۵

تلفن همراه: +۹۸۹۳۹۹۶۰۳۸۰۰

تلفن دفتر مرکزی: +۹۸۲۱ - ۹۱۰۹۲۰۷۶

آدرس پست الکترونیکی: info@atapars.com

آدرس سایت: www.atapars.com

Dual Action Addressable Manual Pull Station



The Dual Action Addressable Manual Pull Station features translucent plastic at the centre, allowing visibility of an internal LED that indicates alarm condition and polling status. The unit is addressable using a DIP switch protected within the pull station. The pull station may be flush mounted on a single gang work box or use an optional back cover (56000-006).

- Control panel compatibility
- Key lock
- Easily resettable
- Lightweight polycarbonate housing

56000-005

Dual Action Addressable
Manual Pull Station

56000-006

Backbox

Mini Monitor Module

(Converts standard pull
station to addressable)



The Mini Monitor Module is an interface within a housing that allows the unit to be fitted onto a standard 35mm DIN-Rail (using a twist-click motion) or mounted within an enclosure, for example a pull station. It is designed to monitor the state of one or more single pole, voltage-free contacts connected on a single pair of cables and to report the status to Apollo compatible analogue control equipment.

55000-765

Mini Monitor Module



آبادگستر تاسیسات ایرانیان (آتا)
Abad Gostar Tasisat Iranian Co., LTD

شرکت آبادگستر تاسیسات ایرانیان



آدرس دفتر مرکزی: ایران - تهران - بزرگراه شهید آیت الله اشرفی اصفهانی - خیابان پیامبر شرقی

خیابان شاهد - خیابان گلستان بیست و ششم - پلاک یک - واحد پنج - کد پستی ۱۴۷۳۶۸۷۷۸۵

تلفن همراه: +۹۸۹۳۹۹۶۰۳۸۰۰

تلفن دفتر مرکزی: +۹۸۲۱ - ۹۱۰۹۲۰۷۶

آدرس پست الکترونیکی: info@atapars.com

آدرس سایت: www.atapars.com

Intrinsically Safe

Apollo offer both analogue addressable and conventional smoke and heat detector ranges designed to be intrinsically safe, as they meet the requirements of the ATEX directive.



Apollo's Intrinsically Safe equipment is incapable of causing ignition in normal conditions, with a single fault or with a combination of any two faults.

XP95[®] orbis™

There are many places where an explosive mixture of air and gas or vapour may be present continuously, intermittently or as a result of an accident. These are defined as hazardous areas by BS EN 60079, the code of practice for installation and maintenance of electrical apparatus in potentially explosive atmospheres.

Hazardous areas are common in petroleum and chemical engineering plants and in factories processing and storing gases, solvents, paints and other volatile substances.

Electrical equipment for use in these areas needs to be designed so that it cannot ignite an explosive mixture, not only in normal operation but also in fault conditions. There are a number of methods available to achieve this but one of the most common is intrinsic safety.

Apollo's IS ranges comply with MED 94/9/EC.



Engineering plants

Hazardous areas and potentially explosive atmospheres within these environments require electrical equipment that cannot ignite an explosive mixture, achievable by using intrinsic safety.



Factory environments

Factories where the processing or storing of gases, solvents, paints and other volatile substances, and are defined as hazardous areas are required to follow the BS EN 60079 code of practice. Apollo Intrinsically Safe ranges fulfil these requirements.



آبادگستر تاسیسات ایرانیان (آآ)
Abad Gostar Tasifat Iranian Co., LTD

شرکت آبادگستر تاسیسات ایرانیان

آدرس دفتر مرکزی: ایران - تهران - بزرگراه شهید آیت الله اشرفی اصفهانی - خیابان پیامبر شرقی

خیابان شاهد - خیابان گلستان بیست و ششم - پلاک یک - واحد پنج - کد پستی ۱۴۷۳۶۸۷۷۸۵

تلفن همراه: +۹۸۹۳۹۹۶۰۳۸۰۰

تلفن دفتر مرکزی: +۹۸۲۱ - ۹۱۰۹۲۰۷۶

آدرس پست الکترونیکی: info@atapars.com

آدرس سایت: www.atapars.com



XP95 IS Optical Smoke Detector



The XP95 IS Optical Smoke Detector works using the light scatter principle and is ideal for applications where slow-burning or smouldering fires are likely.

- Responds well to slow-burning, smouldering fires
- Well suited for escape routes
- Unaffected by wind or atmospheric pressure

55000-640

XP95 IS Optical Smoke Detector

XP95 IS Ionisation Smoke Detector



The XP95 IS Ionisation Smoke Detector uses a low activity radioactive foil to detect fires by irradiating the air in the smoke chamber and causing a current flow. If smoke enters the chamber, the current flow is reduced leading to an alarm.

- Responds well to fast-burning, flaming fires
- Designed to operate in a variety of environments
- Minimal effects from temperature, humidity, atmospheric pressure

55000-540

XP95 IS Ionisation Smoke Detector

XP95 IS Heat Detector



The XP95 IS Heat Detector operates by measuring heat levels with a single thermistor which gives a count output proportional to the external air temperature.

- Ideal for environments that are dirty or smoky under normal conditions
- Unaffected by wind or atmospheric pressure

55000-440

XP95 IS Heat Detector

XP95 IS Mounting Base



The XP95 IS Mounting Base has been designed to accept only IS products. This ensures that standard detectors cannot inadvertently be fitted into an Intrinsically Safe system. XPERT cards are supplied with all bases.

- XPERT addressing
- One way fit
- Only accepts IS detectors

45681-215

XP95 IS Mounting Base

Apollo XP95 IS Manual Call Point



The Apollo XP95 IS Manual Call Point has been designed to be used in atmospheres in which explosive mixtures may be present. The device is rated to be used in Zones 2, 1 & 0.

- Resettable element for testing
- Easy access, front reset mechanism
- A unique, ergonomically designed key for resetting and front cover removal
- IP67 Rated

55200-940

Apollo XP95 IS Manual Call Point

XP95 IS Manual Call Point – MEDC Style



The XP95 IS Manual Call Point – MEDC Style is recommended for heavy duty applications. This model is made of glass-reinforced polyester and may be ordered as break-glass or push-button style.

- Reports address in under 0.2 seconds
- Waterproof
- Robust design

Break-glass:

55000-960 Red

55000-962 Yellow*

55000-964 Blue*

55000-966 Black/yellow stripes*

Break-glass with flap:

55000-961 Red

55000-963 Yellow*

55000-965 Blue*

55000-967 Black/yellow stripes*

Push-button:

55000-970 Red

55000-971 Yellow*

55000-972 Blue*

55000-973 Black/yellow stripes*

* Does not have LPCB or CPD approval, or comply with EN54-11.



آبادگستر تاسیسات ایرانیان (آتا)
Abad Gostar Tasisat Iranian Co., LTD

شرکت آبادگستر تاسیسات ایرانیان

آدرس دفتر مرکزی: ایران - تهران - بزرگراه شهید آیت الله اشرفی اصفهانی - خیابان پیامبر شرقی

خیابان شاهد - خیابان گلستان بیست و ششم - پلاک یک - واحد پنج - کد پستی ۱۴۷۳۶۸۷۷۸۵

تلفن همراه: +۹۸۹۳۹۹۶۰۳۸۰۰

تلفن دفتر مرکزی: +۹۸۲۱ - ۹۱۰۹۲۰۷۶

آدرس پست الکترونیکی: info@atapars.com

آدرس سایت: www.atapars.com



Orbis IS Optical Smoke Detector



The Orbis IS Optical Smoke Detector works using the light scatter principle and is ideal for applications where slow-burning or smouldering fires are likely.

- Reduces false alarms
- Recommended for early warning of fire in most areas
- Improved sensitivity to black smoke
- Compensation for slow changes in sensitivity
- Algorithms for reliability of alarm

ORB-OP-52027-APO

Orbis IS Optical Smoke Detector

ORB-OP-52028-APO

Orbis IS Optical Smoke Detector with flashing LED

Orbis IS Multisensor Smoke Detector



The Orbis IS Multisensor Smoke Detector benefits from the same false alarm technology as the Optical Smoke Detector with the addition of a heat sensing element.

- Reduces false alarms
- Sensitive to fast burning, flaming fires
- Improved sensitivity to black smoke
- Compensation for slow changes in sensitivity
- Algorithms for reliability of alarm

ORB-OH-53027-APO

Orbis IS Multisensor Detector

ORB-OH-53028-APO

Orbis IS Multisensor Detector with flashing LED

Orbis IS Heat Detector



The Orbis IS Heat Detector monitors temperature by using a single thermistor which provides a voltage output proportional to the external air temperature.

- Can be used for applications where smoke detectors are unsuitable
- Ideal for environments that are dirty or smoky under normal conditions
- Reduced incidences of false alarms
- Increased reliability of detection

Standard:

ORB-HT-51145-APO A1R

ORB HT 51157 APO A1S

ORB-HT-51147-APO A2S

ORB-HT-51149-APO BR

ORB-HT-51151-APO BS

ORB-HT-51153-APO CR

ORB-HT-51155-APO CS

With flashing LED:

ORB-HT-51146-APO A1R

ORB HT 51158 APO A1S

ORB-HT-51148-APO A2S

ORB-HT-51150-APO BR

ORB-HT-51152-APO BS

ORB-HT-51154-APO CR

ORB-HT-51156-APO CS



آبادگستر تاسیسات ایرانیان (آتا)
Abad Gostar Tasisat Iranian Co., LTD

شرکت آبادگستر تاسیسات ایرانیان

آدرس دفتر مرکزی: ایران - تهران - بزرگراه شهید آیت الله اشرفی اصفهانی - خیابان پیامبر شرقی

خیابان شاهد - خیابان گلستان بیست و ششم - پلاک یک - واحد پنج - کد پستی ۱۴۷۳۶۸۷۷۸۵

تلفن همراه: +۹۸۹۳۹۹۶۰۳۸۰۰

تلفن دفتر مرکزی: +۹۸۲۱ - ۹۱۰۹۲۰۷۶

آدرس پست الکترونیکی: info@atapars.com

آدرس سایت: www.atapars.com

Orbis IS TimeSaver® Base



The Orbis IS TimeSaver® Base provides installers with an open working area with fixing holes arranged to allow a simple mounting procedure.

- Grouped terminals to make wiring easy
- Two fixing centres
- LED alignment mark
- Detector locking mechanism

ORB-MB-50018-APO
Orbis IS Timesaver® Base

Orbis IS Adaptor



The Orbis IS Adaptor enables Orbis IS detector heads to be fitted into existing Series 60 IS bases in order to upgrade systems with minimal disruption.

- Eliminates the need for re-wiring

ORB-BA-50008-APO
Orbis IS Adaptor

Conventional Galvanic Barrier



The Conventional Galvanic Barrier is installed in the safe area and ensures system integrity.

- Enables compliance with the ATEX directive

29600-378
Conventional
Galvanic Barrier

AV Galvanic Barrier



The AV Galvanic Barrier is installed in the safe area and provides connection to Audio Visual Alarms in a hazardous area.

- Enables compliance with the ATEX directive
- Approved up to SIL3

29600-440
AV Galvanic Barrier



SIL2

Apollo Fire Detectors are pleased to announce that they have a range of devices independently evaluated and certified to SIL2 (Safety Integrity Level) with respect to their primary function (Detection, Manual Call Point, Audio, Visual etc) under IEC61508 Functional Safety of Electrical/ Electronic/ Programmable Electronic Safety-related Systems.



0832



0729



آبادگستر تاسیسات ایرانیان (آتا)
Abad Gostar Tasisat Iranian Co., LTD

شرکت آبادگستر تاسیسات ایرانیان

آدرس دفتر مرکزی: ایران - تهران - بزرگراه شهید آیت الله اشرفی اصفهانی - خیابان پیامبر شرقی

خیابان شاهد - خیابان گلستان بیست و ششم - پلاک یک - واحد پنج - کد پستی ۱۴۷۳۶۸۷۷۸۵

تلفن همراه: +۹۸۹۳۹۹۶۰۳۸۰۰

تلفن دفتر مرکزی: +۹۸۲۱ - ۹۱۰۹۲۰۷۶

آدرس پست الکترونیکی: info@atapars.com

آدرس سایت: www.atapars.com

Discovery Sounder Visual Indicator Base



The Discovery Sounder Visual Indicator Base makes full use of the Discovery protocol. For ease of commissioning a 'Magnetic Wand' can be used to test and adjust each sounder locally.

- It is possible to set individual control of the sounder and visual indicator
- Volume and tone settings can be selected from the control panel
- Tones can be used for other purposes in addition to warning of fire, ideal for schools
- Enables soft start option, ideal for hospitals and nursing homes
- Electronic bell tone

45681-393SIL

Discovery Sounder
Visual Indicator Base

Discovery Heat Detector



The Discovery Heat Detector uses a single thermistor to sense the air temperature around the detector.

- Ideal in environments that are dirty or smoky under normal conditions
- Well suited for warehouses, loading bays and car parks
- Unaffected by wind or atmospheric pressure
- Five response modes
- Remote test feature

58000-400SIL

Discovery Heat Detector

Discovery Ionisation Smoke Detector



The Discovery Ionisation Smoke Detector uses a low activity radioactive foil to detect fires by irradiating the air in the smoke chambers and causing a current flow. If smoke enters the chamber, the current flow is reduced leading to an alarm.

- Responds well to fast-burning, flaming fires
- Designed to operate in a variety of environments
- Resilient to dust
- Five response modes
- Remote test feature

58000-500SIL

Discovery Ionisation Smoke Detector

Discovery Optical Smoke Detector



The Discovery Optical Smoke Detector works using the light scatter principle and is ideal for applications where slow-burning or smouldering fires are likely.

- Responds well to slow-burning, smouldering fires
- Well suited for bedrooms and escape routes
- Unaffected by wind or atmospheric pressure
- Five response modes
- Remote test feature

58000-600SIL

Discovery Optical Smoke Detector

Discovery Multisensor Detector



The Discovery Multisensor Detector comprises optical smoke and thermistor temperature sensors which give both a combined signal as well as a separate heat signal for improved false alarm management.

- Ideal for a wide range of applications
- Enhanced false alarm management
- Recommended, in specific modes, for hotel bedrooms and hospital wards
- Unaffected by wind or atmospheric pressure
- Well suited for sensitive environments
- Five response modes
- Heat only and optical only options
- Remote test feature

58000-700SIL

Discovery Multisensor Detector

XP95 IS Heat Detector



The XP95 IS Heat Detector operates by measuring heat levels with a single thermistor which gives an analogue value output proportional to the external air temperature.

- Ideal for environments that are dirty or smoky under normal conditions
- Unaffected by wind or atmospheric pressure

55000-440SIL

XP95 IS Heat Detector



آباد گستر تاسیسات ایرانیان (آتا)
Abad Gostar Tasisat Iranian Co., LTD

شرکت آباد گستر تاسیسات ایرانیان

آدرس دفتر مرکزی: ایران - تهران - بزرگراه شهید آیت الله اشرفی اصفهانی - خیابان پیامبر شرقی

خیابان شاهد - خیابان گلستان بیست و ششم - پلاک یک - واحد پنج - کد پستی ۱۴۷۳۶۸۷۷۸۵

تلفن همراه: +۹۸۹۳۹۹۶۰۳۸۰۰

تلفن دفتر مرکزی: +۹۸۲۱ - ۹۱۰۹۲۰۷۶

آدرس پست الکترونیکی: info@atapars.com

آدرس سایت: www.atapars.com

XP95 IS Ionisation Smoke Detector



The XP95 IS Ionisation Smoke Detector uses a low activity radioactive foil to detect fires by irradiating the air in the smoke chamber and causing a current flow. If smoke enters the chamber, the current flow is reduced leading to an alarm.

- Responds well to fast-burning, flaming fires
- Designed to operate in a variety of environments
- Minimal effects from temperature, humidity, atmospheric pressure

55000-540SIL

XP95 IS Ionisation Smoke Detector

XP95 IS Optical Smoke Detector



The XP95 IS Optical Smoke Detector works using the light scatter principle and is ideal for applications where slow-burning or smouldering fires are likely.

- Responds well to slow-burning, smouldering fires
- Well suited for escape routes
- Unaffected by wind or atmospheric pressure

55000-640SIL

XP95 IS Optical Smoke Detector



آبادگستر تاسیسات ایرانیان (آتا)
Abad Gostar Tasisat Iranian Co., LTD

شرکت آبادگستر تاسیسات ایرانیان

آدرس دفتر مرکزی: ایران - تهران - بزرگراه شهید آیت الله اشرفی اصفهانی - خیابان پیامبر شرقی

خیابان شاهد - خیابان گلستان بیست و ششم - پلاک یک - واحد پنج - کد پستی ۱۴۷۳۶۸۷۷۸۵

تلفن همراه: +۹۸۹۳۹۹۶۰۳۸۰۰

تلفن دفتر مرکزی: ۹۱۰۹۲۰۷۶ - ۹۸۲۱

آدرس پست الکترونیکی: info@atapars.com

آدرس سایت: www.atapars.com



Input/Output Unit



The Input/Output Unit provides a voltage-free, double pole changeover (DPCO) relay output, a single monitored switch input and an unmonitored, non-polarised opto-coupled input.

- It can report fault, switch open and switch closed levels
- Three visible LEDs
- Loop-powered
- Capable of switching up to 30V at 1A

55000-847SIL Input/Output Unit

Output Unit



The Output Unit provides a voltage-free single pole, changeover relay output. It is a simplified version of the Input/Output Unit without circuitry for monitoring inputs.

- Capable of switching up to 30V at 1A

55000-849SIL
Output Unit

Apollo XP95 IS Manual Call Point



The Apollo XP95 IS Manual Call Point has been designed to be used in atmospheres in which explosive mixtures may be present. The device is rated to be used in Zones 2, 1 & 0.

- Resettable element for testing
- Easy access, front reset mechanism
- A unique, ergonomically designed key for resetting and front cover removal
- IP67 Rated

55200-940SIL
Apollo XP95 IS Manual Call Point



آبادگستر تاسیسات ایرانیان (آتا)
Abad Gostar Tasisat Iranian Co., LTD

شرکت آبادگستر تاسیسات ایرانیان

آدرس دفتر مرکزی: ایران - تهران - بزرگراه شهید آیت الله اشرفی اصفهانی - خیابان پیامبر شرقی

خیابان شاهد - خیابان گلستان بیست و ششم - پلاک یک - واحد پنج - کد پستی ۱۴۷۳۶۸۷۷۸۵

تلفن همراه: +۹۸۹۳۹۹۶۰۳۸۰۰

تلفن دفتر مرکزی: +۹۸۲۱ - ۹۱۰۹۲۰۷۶

آدرس پست الکترونیکی: info@atapars.com

آدرس سایت: www.atapars.com

Apollo Addressable Manual Call Point



Apollo's Manual Call Point has a highly visible alarm indicator which can be seen from up to 10 metres away. When activated, the manual call point interrupts the polling cycle for a fast response and has a combined LED indicator and front reset mechanism allowing for a quick and simple reset.

- EN54-11 Approved (EN54-17 Approved for Isolator version)
- E-Z fit connectors
- Front facing addressing without the need to detach the back box
- A unique, ergonomically designed key for resetting and front cover removal
- Backward compatibility and retro-fit
- Resettable element

55200-908SIL

XP95 Manual Call Point with Isolator

58200-908SIL

Discovery Manual Call Point with Isolator

Apollo Discovery Marine Manual Call Point



The Discovery Marine Manual Call Points have been approved to EN54-11 and the Marine Equipment Directive 96/98/EC. The Marine Manual Call Points boast an IP45 rated (Indoor) and IP67 rated (Outdoor) model to meet the demands of Marine and Offshore environments.

- Resettable element for testing
- Easy access, front reset mechanism
- A unique, ergonomically designed key for resetting and front cover removal
- IP45 Rated (Indoor Only)
- IP67 Rated (Outdoor Only)

58200-971SIL

Discovery Marine Manual Call Point with isolator

58200-976SIL

Discovery Marine Waterproof Manual Call Point with isolator

Apollo Waterproof Manual Call Point



Apollo's Waterproof Manual Call Point has a highly visible alarm indicator which can be seen from up to 10 metres away. The Manual Call Point interrupts the polling cycle for a fast response, when activated. A combined LED indicator and front reset mechanism allows for a quick and simple reset.

- IP67 rated
- EN54-11 Approved (red version only)
- EN54-17 Approved for Isolator version
- A unique, ergonomically designed key for resetting and front cover removal
- Captive screws

58200-951SIL

Apollo Waterproof Manual Call Point with Isolator



شرکت آبادگستر تاسیسات ایرانیان

آدرس دفتر مرکزی: ایران - تهران - بزرگراه شهید آیت الله اشرفی اصفهانی - خیابان پیامبر شرقی
 خیابان شاهد - خیابان گلستان بیست و ششم - پلاک یک - واحد پنج - کد پستی ۱۴۷۳۶۸۷۷۸۵
 تلفن دفتر مرکزی: ۹۱۰۹۲۰۷۶ - ۹۸۲۱
 تلفن همراه: ۹۸۹۳۹۹۶۰۳۸۰۰

آدرس پست الکترونیکی: info@atapars.com

آدرس سایت: www.atapars.com



آبادگستر تاسیسات ایرانیان (آتا)
 Abad Gostar Tasiasat Iranian Co., LTD



Beam Detectors

Beam Detectors offer a cost effective solution for protecting large open spaces. One single unit installed on a wall can detect smoke over an area up to 1500m² (BS5832), which is beyond that of traditional point detectors. Beams are therefore ideal for protecting areas such as warehouses, theatres and sports centres.

Types of Beam Detector:

- Auto-Aligning: comprises a combined transmitter/receiver which is operated through a low-level, easy-access control console. As the name suggests the detector compensates for building movement.
- Reflective: the combined transmitter/receiver projects a beam to a prism mounted on an opposite wall.
- End-to-End: consists of a separate transmitter, receiver and interface.

There are many important factors to be considered when deciding which beam detector to select, and in case of doubt please contact our Product Support Department, details of which can be found on the Apollo website.



شرکت آبادگستر تاسیسات ایرانیان

آدرس دفتر مرکزی: ایران - تهران - بزرگراه شهید آیت الله اشرفی اصفهانی - خیابان پیامبر شرقی

خیابان شاهد - خیابان گلستان بیست و ششم - پلاک یک - واحد پنج - کد پستی ۱۴۷۳۶۸۷۷۸۵

تلفن همراه: +۹۸۹۳۹۹۶۰۳۸۰۰

تلفن دفتر مرکزی: +۹۸۲۱ - ۹۱۰۹۲۰۷۶

آدرس پست الکترونیکی: info@atapars.com

آدرس سایت: www.atapars.com

Auto-Aligning Beam Detector with laser alignment



The high performance Auto-Aligning Beam Detector comprises ground level controller, detector head with auto-aligning feature, integral laser for rapid initial alignment and single prism. An additional detector head can be added to the controller.

- Auto compensates for building movement and contamination
- IP54 rated
- Use XP95 Switch Monitor to interface
- Integral laser and auto-align enable quicker installation
- Low level system controller with LCD display and user friendly interface

29650-069

Auto-Aligning Beam Detector 8-50m

29650-070

Additional Detector Head 8-50m

29600-526 Extension Kit 100m

29600-527

Universal Bracket (for use with detector head and prism mounting plates)

29600-528

Surface Mounting Plate for prisms

29600-529

Prism Mounting Plate (4 prisms 100m)

29600-530

Prism Mounting Plate (1 prism 8-50m)

Auto-Aligning Beam Detector



The Auto-Aligning Beam Detector includes a ground level controller, a detector head with auto-aligning feature and one prism with an operating range of 5-40m.

- Ground level controller
- Auto compensates for building movement
- Current consumption 3.5mA
- IP65 rated
- Use XP95 Switch Monitor to interface to an addressable loop

29600-350

Auto-Aligning Beam Detector 5-40m

29600-351

Extension Kit 40-80m

29600-352

Extension Kit 80-100m

29600-353

Adaptor Plate

Intelligent Reflective Beam Detector



The Intelligent Reflective Beam Detector differs from a traditional beam detector in that it is a single unit which houses a transmitter, a receiver and the control electronics. The beam detector is available in two versions: a single reflector model for distances of 5-50m and a more powerful four-reflector unit for distances of 50-100m.

- Loop-powered
- Compatible with Discovery and XP95 protocols
- Incorporates a short-circuit isolator
- Automatic drift compensation
- Automatic reset following alarm or fault condition

55000-268

Intelligent Reflective Beam Detector 5-50m

55000-273

Intelligent Reflective Beam Detector 50-100m



آدرس دفتر مرکزی: ایران - تهران - بزرگراه شهید آیت الله اشرفی اصفهانی - خیابان پیامبر شرقی
خیابان شاهد - خیابان گلستان بیست و ششم - پلاک یک - واحد پنج - کد پستی ۱۴۷۳۶۸۷۷۸۵
تلفن دفتر مرکزی: ۹۱۰۹۲۰۷۶ - ۹۸۲۱ +
تلفن همراه: ۹۸۹۳۹۹۶۰۳۸۰۰ +
آدرس پست الکترونیکی: info@atapars.com
آدرس سایت: www.atapars.com